

THE PROBLEM

The first hours are critical in a disaster situation. Initial decisions made by incident command are based on the location and condition of the people in the affected area.

Correct assessment and rapid assistance can save lives.

"...blinding lack of situational awareness and disjointed decision making needlessly compounded and prolonged Katrina's horror." The Katrina White House report 2006

Cell towers and other communication networks commonly collapse during a disaster. This affects the information filtering back to central command. Erratic and inaccurate information can cause the first important response hours to become lost to uncertainty.

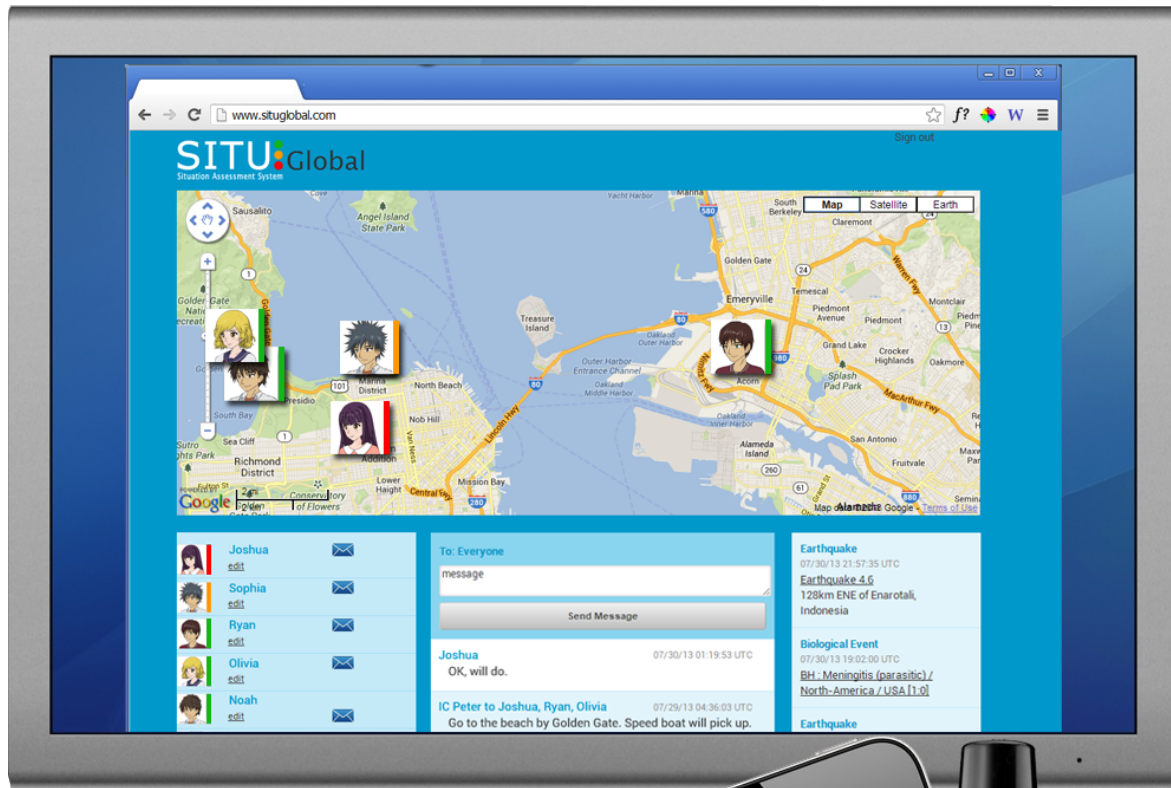
THE CUSTOMERS

Situ Global was initially developed as part of a communications tool for resistance efforts in a war zone and later modified into a back up security system for a family and their employees during the event of a natural disaster. The current solution has been expanded for use by any organization or entity in need of a self-sufficient and dependable system for personnel evaluation and communications during emergencies or atypical circumstances.

WHAT IS SITU GLOBAL?

The (patent pending) SituGlobal software/hardware solution allows an incident command team to rapidly assess location and status of individuals utilizing a cloud based situation platform and open a direct two way communication to its members. Key features:

- Familiar hardware (users' own mobile phones)
- iPhone/Android compatible
- Integrated in satellite trackers in case of cell tower failures
- Map overview and status function for rapid situation assessment
- Instant messaging feature between member and command central
- Synchronized external alert feeds to command platform
- Uplink agnostic - no global restrictions



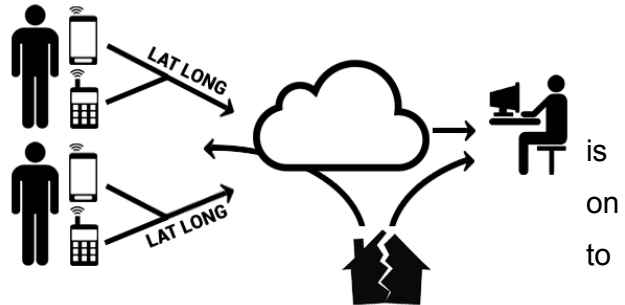
- Familiar personal smart phones
- Off-the-shelf satellite beacons
- Easy training and setup
- Low cost
- Scalable and situation specific
- Global coverage

SCHEMATICS

Pre-event

Knowing locations *pre-strike*.

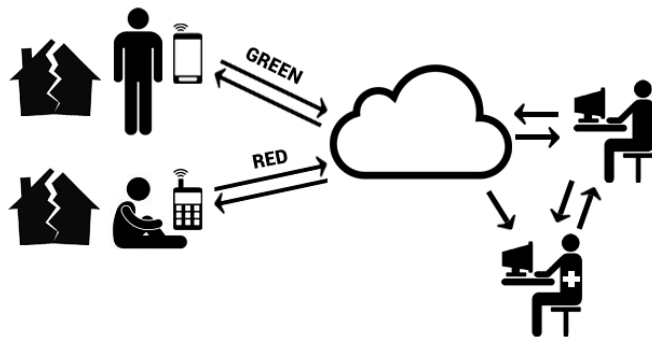
Illustration shows SituGlobal on stand-by. Passive monitoring of individual locations to enabled by background processes running the smartphone and/or the satellite beacon the situation platform. General disaster information feeds are geo filtered for early alerts.



First minutes of event

Status assessment within minutes.

Illustration shows the system immediately after an event. One individual is unharmed and updates live status (green) from his smartphone. One individual is injured and has no mobile network. The individual



updates status (red) from satellite beacon. Change of status on the platform automatically alerts command team that an incident has occurred. The situation is assessed immediately with key data on the interactive map.

The first hours

Two-way communication and deployment of resources.

Illustration shows the system after initial situation assessment. Two-way communication is used by incident command to receive more information and send out detailed instructions to affected individuals. Resources can be allocated rapidly and effectively.

